

School Performance Information

As required by the Commonwealth Government

Data Year: 2008

Indicator	Comments	Result
Staff Attendance:	<p>"Staff" means all permanent full and part time employees</p> <p>"Attendance" means present at any school approved activity.</p> <p>"Non attendance" means absent from expected school activity due to sickness or other personal absence.</p> <p>Calculation is: Actual hours of attendance/Expected hours of attendance %</p>	<p>98.7%</p> <p>Last year 99%</p>

Staff Retention:	Comments	2007		2008		
		Head count	FTE	Head count	FTE	
	<p>This is the difference between total staff numbers and staff FTE (Full Time Equivalent) in the data year compared with the previous year.</p> <p>Between 2007 and 2008 our total number of teachers increased by one due to the extension into class 7, and music teachers increased FTE. Aides decreased by one, but an existing aide increased to full time.</p>					
		Teachers	11	6.2	12	8.0
		Aides	3	0.9	2	1.6
		Preschool	3	1.6	3	1.6
		Admin	2	1.3	2	1.3
		Bldgs&Grnds	2	0.4	2	0.4
		Total	21	10.4	21	12.8

Teaching Qualifications:	Steiner teacher trained	
CHASTON, Howard	BA, B Mus (performance violin) VCA	
CUMMINS, Fran	Bachelor Of Education, Diploma Of Teaching (Primary), Grad Dip (Special Ed), Grad Dip Buisness, Bothmer Gym training	Yes
PAULL-LANGEVAD, Dianne	Bachelor Of Teaching	Yes
MEDLEY, Jeanette	Bachelor Of Arts, Diploma of Education,	
REYNOLDS, Matthew	Bachelor Of Arts, Diploma of Education,	Yes
ROBERTS, Kaye	Bachelor of Arts, Diploma of Education, Graduate Diploma of Librarianship	
VAUGHAN, Taryn	Bachelor Of Teaching (Early Childhood)	Yes
SMITH, Richard	Bachelor of Science (hons); Diploma of Education; PhD (Chemistry)	
CLEELAND, Amanda	Bachelor Of Arts (hons), Diploma of Education,	
BERENYI, Peter	Teachers Certificate, Teachers Certificate (Specialist), Bothmer Gym training, Extra lesson	
SUNDERLAND, Peter	Bachelor of Arts (Japanese)	

Expenditure & Teacher Participation in PD:	
Total \$ amount spent in 2008 on Teacher PD	\$ 2,796
% of above for relief teaching	10%
Amount allocated in budget for Teacher PD	\$ 4,000
allocated \$ amount as percent of teacher payroll	1%
Average hours per teacher per week in inhouse PD, not shown in above	4
It is important to note that within the Steiner Schools networks much of the PD is either free or at a much lower cost than comparable external courses	
External courses & conferences attended in 2008	
Web 2 technologies workshop, Insurance/Essential services workshop/RSSA govenance conference (Richard); Bothmer Gym, Bellingen (Fran, Peter); 21827 VIC course in Anapylaxis Awareness (All staff); Senior First Aid 21452VIC (update) (Fran, Richard); Class 1 teacher workshop, Glenaeon (Jeanette); RSSA Conf Little Yarra (Matthew); DEECD Education for sustainability PD day (Sally, Taryn); DHS Incident report training (Richard, Taryn)	

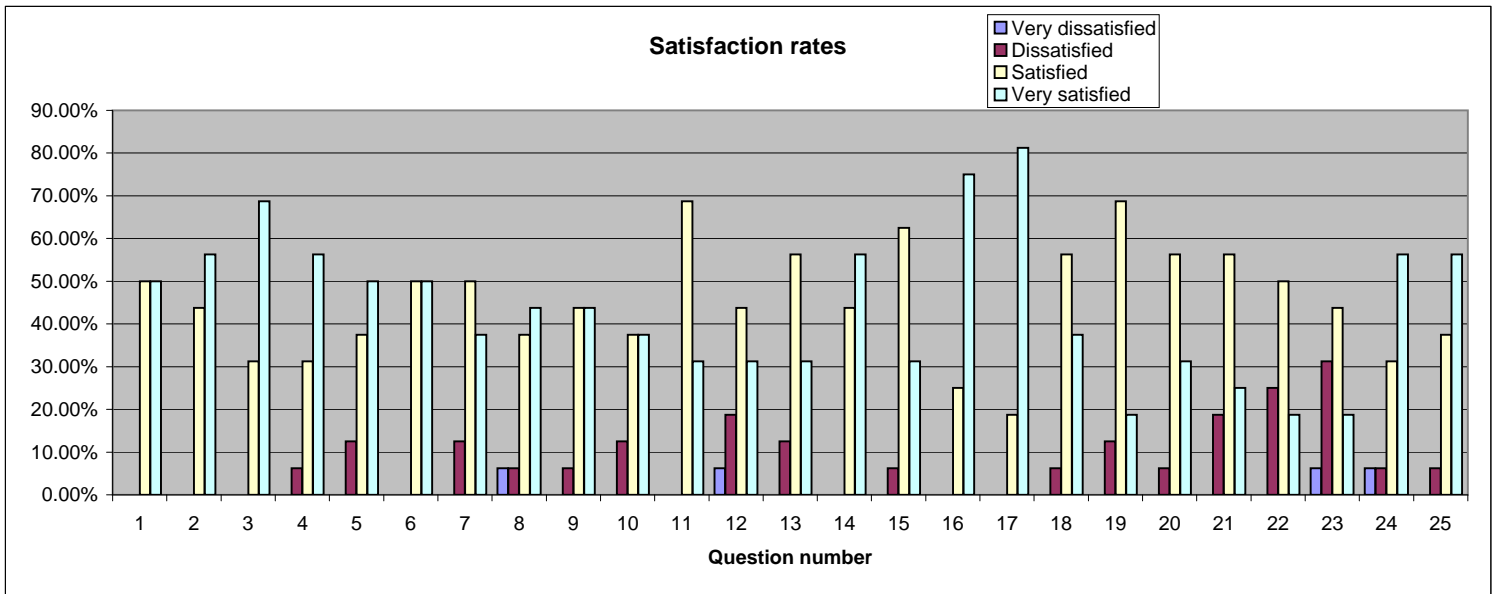
Student Absences	
Calculated as $\frac{\text{total student days absent}}{\text{student numbers} \times \text{teaching days}}$ expressed as percentage	5.9%
Refers to classes Prep to 7	

"Value Added" - What is special about our school?
<ul style="list-style-type: none"> ★ We are a Rudolf Steiner School; our Class Teachers are all Steiner trained as well as State trained and are highly experienced in creative presentation of a rich Steiner Curriculum. There is a strong sense of stability and continuity of core staff. ★ We are a small country school, well established into our local community. The scale of the school gives a feel of community, and children mix and play happily with a wide range of children from different classes. The parent community of the School is welcoming and friendly, and many adult activities also centre around the school ★ We have a strong music programme, singing from Kindergarten, recorder from class 1, violin and 'cello from class 3, with good links into the local high school orchestra ★ Our buildings are designed to be environmentally friendly and water self-sufficient. They are consciously designed with natural colours and materials to create an atmosphere of peace and focus. The gardens and paths are designed in keeping with this. ★ We offer a good range of sports and other physical activities, including cross country and downhill skiing at local snowfields ★ We offer a "spade to plate" programme, growing organic and biodynamic fruit & vegetables which are then prepared and cooked by the classes for school lunches ★ We act from an awareness of the Spiritual nature of Humanity and the Cosmos, however we do not espouse or teach any particular religion, spiritual path or dogma. ★ We run a focused literacy and numeracy programme so that any child displaying problems in these areas receives personal attention. ★ There is a practical aspect to what we do, with each class presenting 2 class plays each year, camps and excursions linked to curriculum and practical building projects, with strawbale, mudbrick etc.

Surveys	See overleaf
---------	--------------

This survey of school families was conducted in Novemebr 2008

	Count	Very Dissatisfied	Dissatisfied	Satisfied	Very Satisfied
1. How welcome you feel when entering the school	16	0.00%	0.00%	50.00%	50.00%
2. The learning environment in the classroom	16	0.00%	0.00%	43.75%	56.25%
3. The curriculum your child is being taught	16	0.00%	0.00%	31.25%	68.75%
4. The emphasis on basic reading, writing, and mathematical skills	15	0.00%	6.25%	31.25%	56.25%
5. School's policy on computers & AV use	16	0.00%	12.50%	37.50%	50.00%
6. The quality of learning resources available to your child	16	0.00%	0.00%	50.00%	50.00%
7. The amount of help and support provided to your child by the teachers	16	0.00%	12.50%	50.00%	37.50%
8. Your child is being challenged to do his or her best	16	6.25%	6.25%	37.50%	43.75%
9. The amount of homework your child has	15	0.00%	6.25%	43.75%	43.75%
10. Your child's academic achievement	16	0.00%	12.50%	37.50%	37.50%
11. Your child is learning to take responsibility for his or her own actions	16	0.00%	0.00%	68.75%	31.25%
12. The discipline in the school	16	6.25%	18.75%	43.75%	31.25%
13. The safety of your child at school	16	0.00%	12.50%	56.25%	31.25%
14. School administration generally	16	0.00%	0.00%	43.75%	56.25%
15. The leadership and direction provided by administrators in your child's school	16	0.00%	6.25%	62.50%	31.25%
16. The external appearance of the school and its grounds	16	0.00%	0.00%	25.00%	75.00%
17. The internal appearance of the school	16	0.00%	0.00%	18.75%	81.25%
18. The information you receive about the school in the Messenger	16	0.00%	6.25%	56.25%	37.50%
19. Communication generally about School events & activities	16	0.00%	12.50%	68.75%	18.75%
20. The variety of educational programs offered by the school district	15	0.00%	6.25%	56.25%	31.25%
21. The opportunity for you to be involved in decisions affecting education in your child's school	16	0.00%	18.75%	56.25%	25.00%
22. The access to and quality of information you receive from your child's school or other sources about your child's educational progress and achievement	16	0.00%	25.00%	50.00%	18.75%
23. The number of school reports & parent teacher interviews	16	6.25%	31.25%	43.75%	18.75%
24. The overall quality of education that your child is receiving in his or her school	16	6.25%	6.25%	31.25%	56.25%
25. Your child's school overall	16	0.00%	6.25%	37.50%	56.25%



NAPLAN Testing

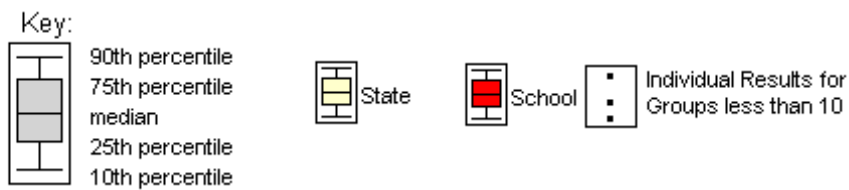
Our school, as with many others in the Steiner school movement as well as outside it, believe that nation benchmark testing in counterproductive to the balanced education of the whole child. For this reason, although we offer the tests each year, the majority of families withdraw their children from the testing, particularly in the earlier years. Here is the official report on the result of the tests which were done:

MANSFIELD RUDOLF STEINER SCHOOL

School Summary Report

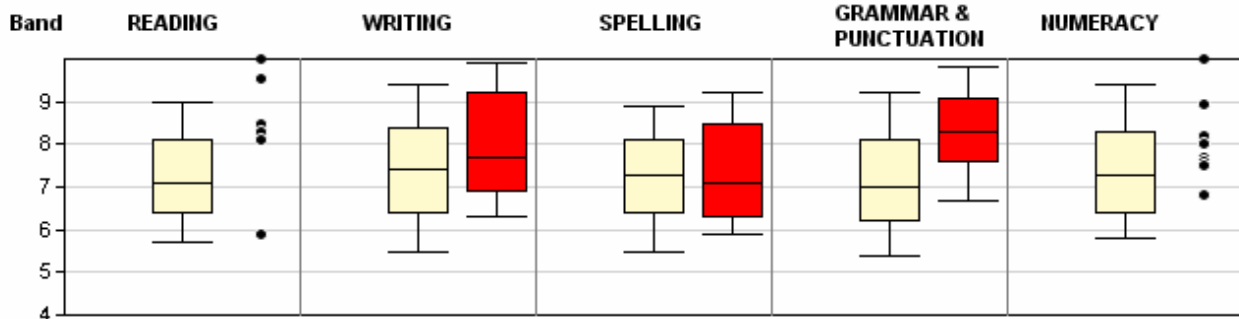
National Assessment Program - Literacy and Numeracy Tests 2008

Date: 07/10/2008 Time: 12:28:56 PM



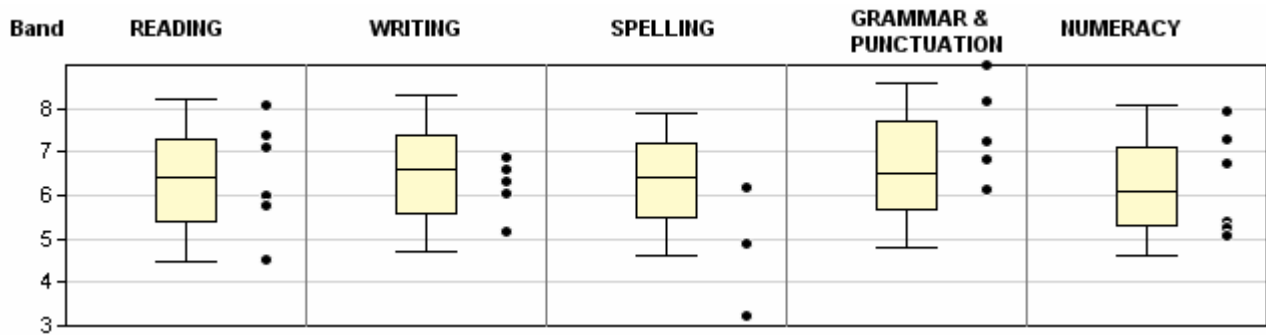
THIS REPORT USES THE NATIONAL ASSESSMENT PROGRAM SCALE

Year 7



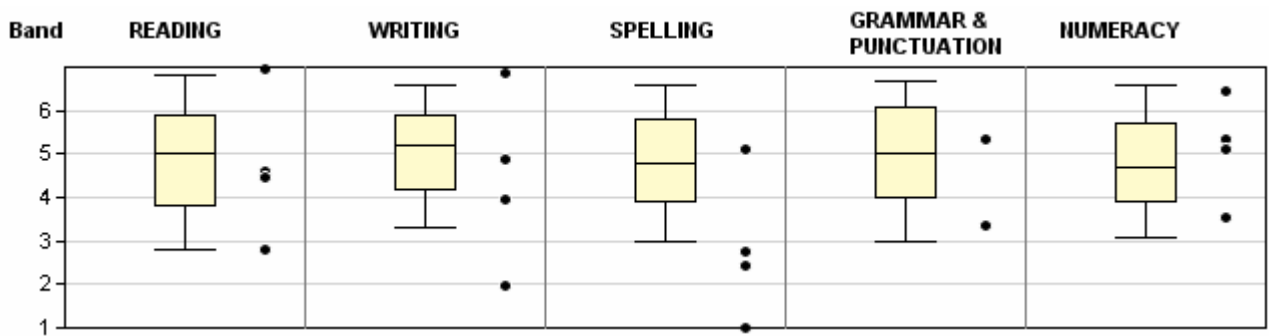
	Reading	Writing	Spelling	Grammar	Numeracy
Percent meeting Benchmark	100%	100%	100%	100%	100%
No in Class tests sat	13	13	13	13	13
No over benchmark (Band 5)	9	10	10	10	9

Year 5



	Reading	Writing	Spelling	Grammar	Numeracy
Percent meeting Benchmark	100%	100%	67%	100%	100%
No in Class	8	8	8	8	8
tests sat	6	5	3	6	6
No over benchmark (Band 4)	6	5	2	6	6

Year 3



	Reading	Writing	Spelling	Grammar	Numeracy
Percent meeting Benchmark	100%	75%	75%	100%	100%
No in Class	10	10	10	10	10
tests sat	4	4	4	2	4
No over benchmark (Band 2)	4	3	3	2	4