



Adjustable End Clamp

New Product

Grace Solar continuous innovation to service the customer. For the various thickness of the framed module, the adjustable end clamp is designed for your choice. This new product is used to fix the end side of the module. It is assembled by two aluminum parts and one of them can be inserted into the special ladder of the other one to change the mount height from 25mm to 60mm.



Lowest



Basic Information

Item No.	GR-EC-A40
Description	Adjustable End Clamp
Material	Aluminum Parts and Stainless Steel Fasten
Finish	Anodized
Width	40mm
Module Install	Module thickness between 25~60mm can be installed
Weight	0.088Kg/pcs
Package	50pcs in a box 4 boxes in a carton

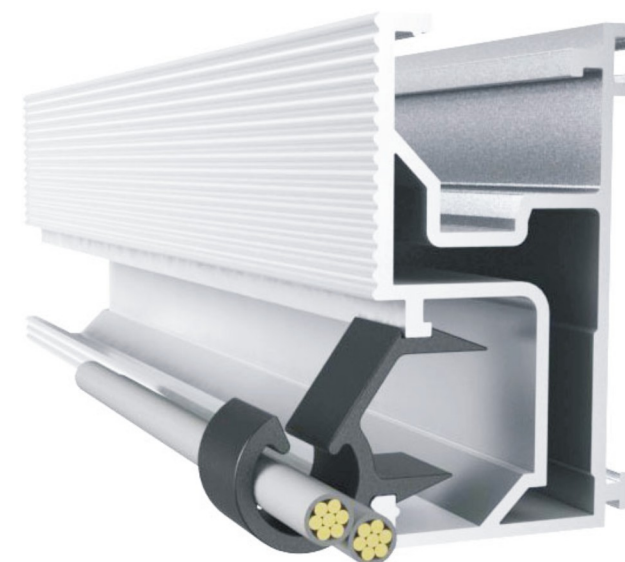


Highest

Plastic Cable Clip

New Product

Grace Solar Plastic Cable Clip can be mounted on the GR Rail easily to manage the wire of the module. The clip is made of plastic with high performance in aging resistance and insulativity. It is designed to prevent damage to cable insulation. The easy to install and remove design do not require any tools but hand and can be reused, unlike zip ties. The universal design fits most modules can hold one or two wires.



Basic Information

Item No.	GR-A-PC01
Description	Plastic Cable Clip 1#
Material	Plastic
Weight	0.0022Kg
Wire Install	Universal



GR-A-PC01